

Tri-Level User Interface

Another I.M. Exclusive

Three separate touchscreen interfaces make it easy and secure to set-up, adjust and monitor the MS-7,500/DS+ during operation.

Level One/Operator Mode

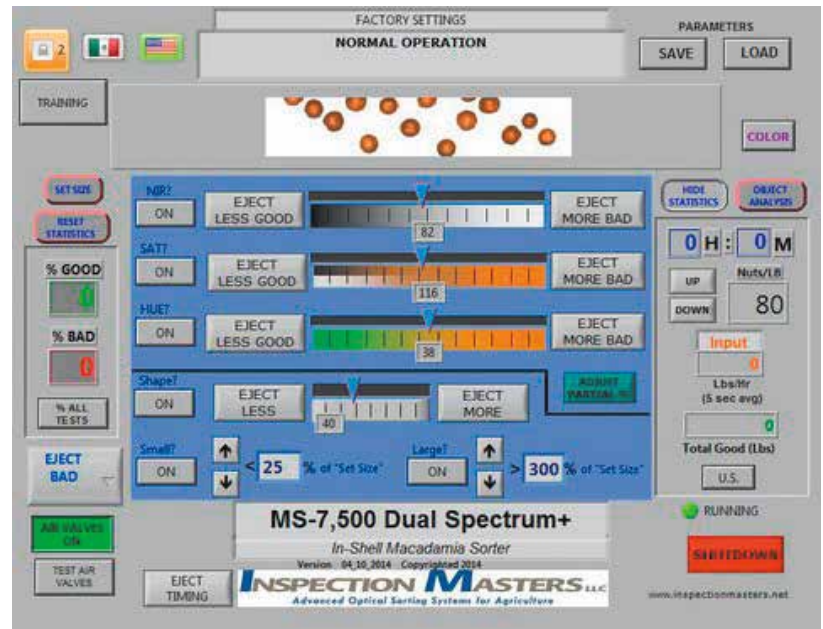
The MS-7,500/DS+ starts up at this level by default. With this interface the operator can make routine adjustments to optimize sorter performance. Slider controls are provided so that sort criteria can be fine tuned. The Operator is also able to name and save any particular set of adjustments for future use. Sort statistics — % Accepts and Rejects, pounds processed, etc. are shown on this interface.

Level Two/Supervisor Mode

The settings that require a deeper understanding of the MS-7,500/DS+ operation are reserved for the Supervisor Mode, which may be password protected if desired. For example, this level includes the “Training” mode, in which the system “learns” what objects to accept or reject by running a small sample through the sorter. At this level, the Supervisor can also run an air valve test, reverse the sort, adjust ejection timing and perform object analysis in order to better understand how the sorter is detecting product and foreign material.

Level Three/Technician Mode

This level is always password protected, and provides access to the troubleshooting functions for I.M.’s qualified technicians. Access to this level can be on site, or via an internet connection from our offices. When an internet connection is provided, our technicians are able to capture live images of the product flow for off line analysis, and remotely make all Level One and Level Two adjustments as needed.



The Touchscreen Interface can be set by the operator to display information in either Imperial or Metric measurements.

